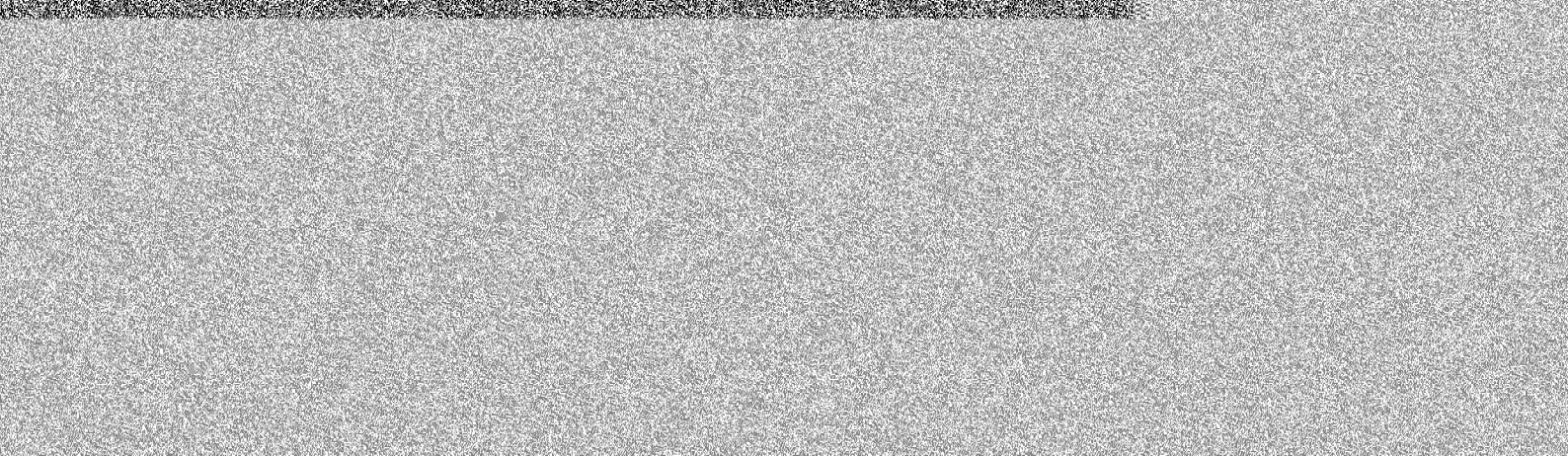
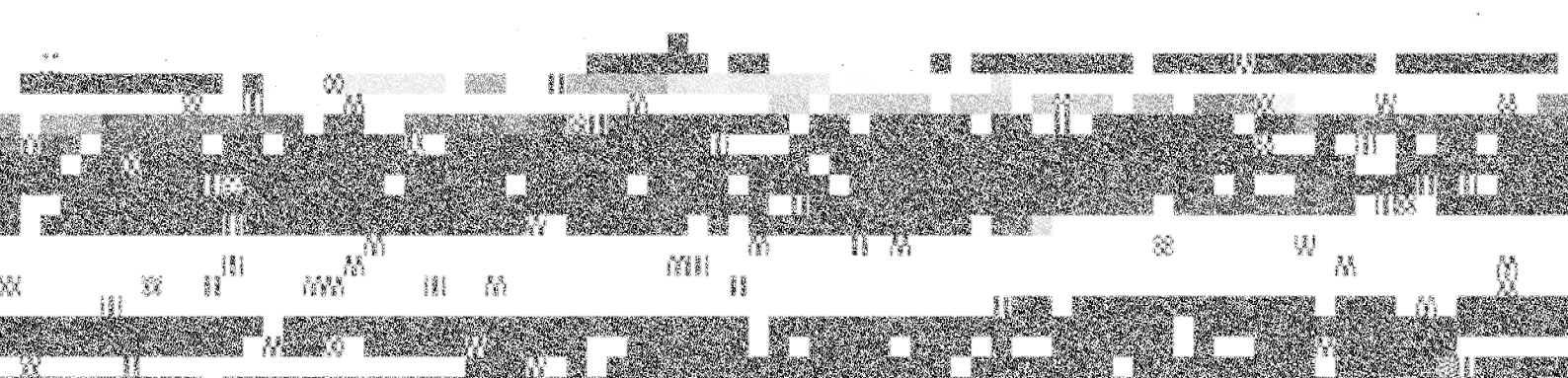
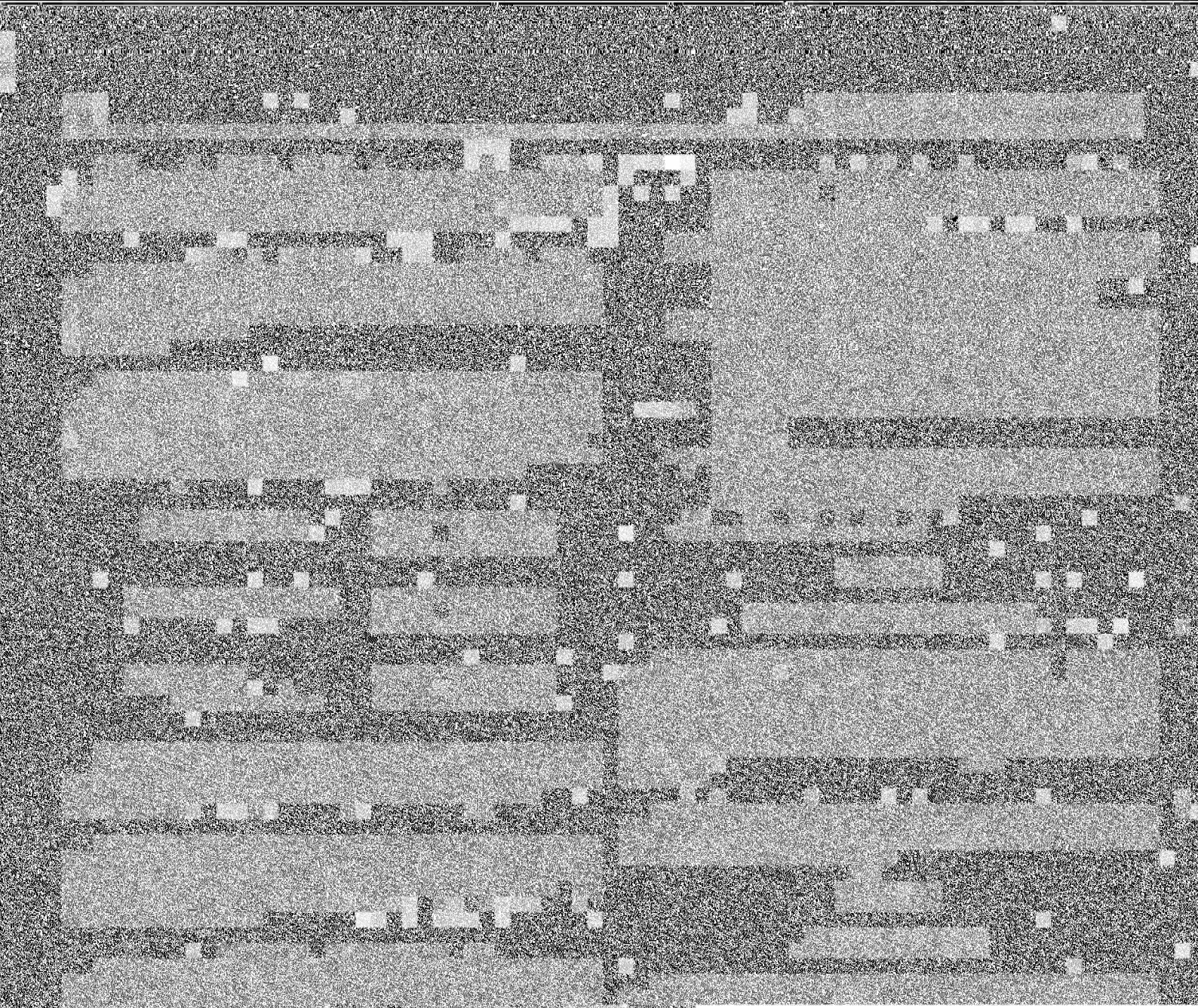




3	Ilha da Boia (NW)	11	00	00	20	S	05	30	00	P
4	Ilha Cabado (SW)	12	00	00	00	N	16	30	00	F



THE UNIVERSITY OF CHICAGO

DEPARTMENT OF CHEMISTRY

PHYSICAL CHEMISTRY

PHYSICAL CHEMISTRY

PHYSICAL CHEMISTRY

PHYSICAL CHEMISTRY

PHYSICAL CHEMISTRY

PHYSICAL CHEMISTRY

PHYSICAL CHEMISTRY

PHYSICAL CHEMISTRY

PHYSICAL CHEMISTRY

PHYSICAL CHEMISTRY

PHYSICAL CHEMISTRY

PHYSICAL CHEMISTRY

PHYSICAL CHEMISTRY

PHYSICAL CHEMISTRY

PHYSICAL CHEMISTRY

PHYSICAL CHEMISTRY

PHYSICAL CHEMISTRY

PHYSICAL CHEMISTRY

PHYSICAL CHEMISTRY

PHYSICAL CHEMISTRY

PHYSICAL CHEMISTRY

PHYSICAL CHEMISTRY

PHYSICAL CHEMISTRY

PHYSICAL CHEMISTRY

PHYSICAL CHEMISTRY

PHYSICAL CHEMISTRY

PHYSICAL CHEMISTRY

PHYSICAL CHEMISTRY

PHYSICAL CHEMISTRY

PHYSICAL CHEMISTRY

PHYSICAL CHEMISTRY

PHYSICAL CHEMISTRY

